

# GEMMA



Deluxe Facade



Cleverly designed to capture all daylight while emanating warmth, space and comfort Gemma hits the mark on all accounts.

Here quality meets affordability and the results speak for themselves.

Flawless living spaces seamlessly integrate with the outdoor areas to provide year round versatility making this a perfect home for entertaining.




Well conceived floor plans exude a sense of spaciousness, convenience and privacy thanks to four double bedrooms, a designer styled kitchen, two bathrooms as well as ample living areas.

A distinctively rendered feature front wall is off-set by the warm tones and materials used on the exterior to ensure optimal curb side appeal. Those wanting more can opt for the special Coastal façade featuring the extensive use of timberesque gables.

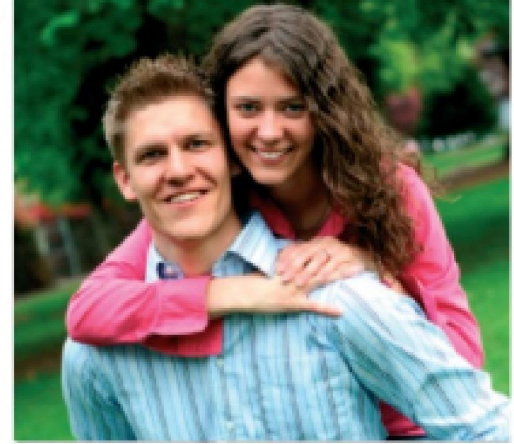
Without a doubt living at Gemma means living the lifestyle you've always dreamed of.



Standard Facade

	4
	2
	198m <sup>2</sup>





## ORACLE'S TURN-KEY HOME AND LAND PACKAGES

### QUALITY MEETS AFFORDABILITY

Oracle's Turn-Key Home and Land packages take the stress out of any property purchase, right down to the very last detail.

That means your new home's carpets & tiles, blinds, fencing, turfing, driveway - even your letterbox - are taken complete care of.

All you need to do is turn the key, walk in and relax back into your new lifestyle. And what a lifestyle you're promised. All of Oracle's Turn-Key packages are located in highly desirable residential areas, in close proximity to schools, leisure facilities, retail outlets and transport.

